

# Eel grass (*Zostera marina*)

Liliopsida (Tracheophyta :Najadales)



Grass like flowering plant that grows on subtidal sand and gravel substrates typically from 5-12m in depths. Morphology may vary based on the tidal and other currents in an area. Typically found deeper than the dwarf eel grass (*Z. noltii*). Tends to occur in dense clumps or meadows in sheltered lagoons, estuaries or bays.

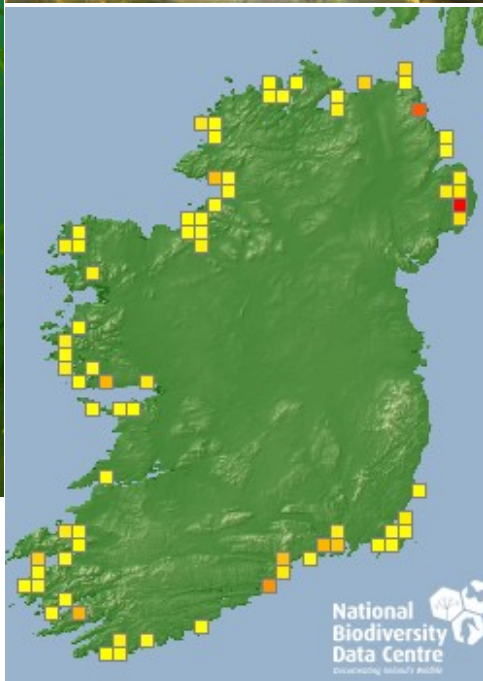
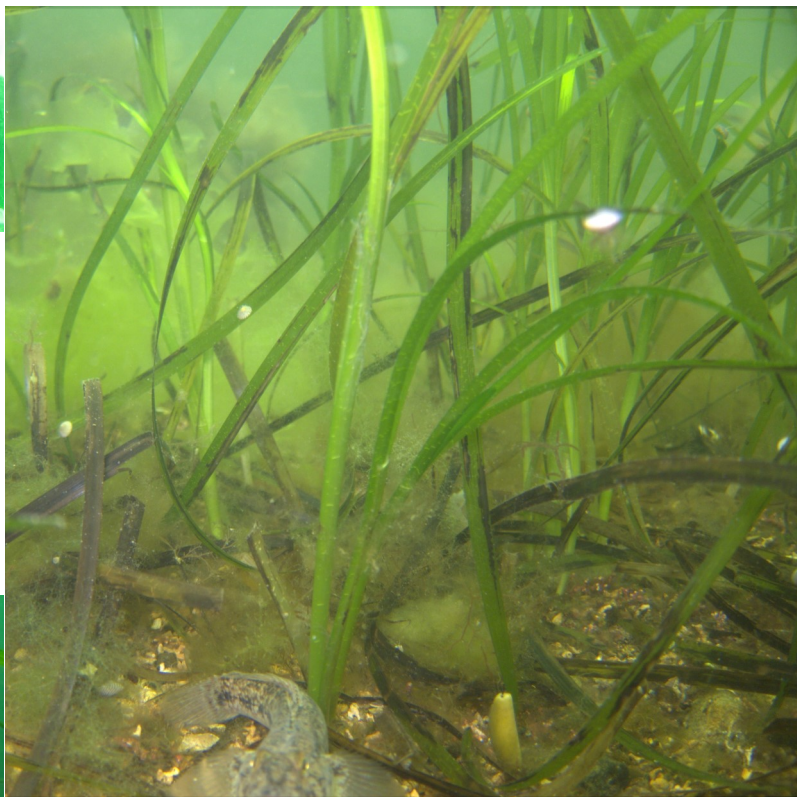


Only found in sheltered or extremely sheltered sites this species is typically found between 5 and 13m in depth. Widely distributed around the Irish coast but not particularly common.

Taxonomy: Plantae->Tracheophyta->Liliopsida->Najadales

IUCN Red List Categorisation: Least Concern

A widespread species it is circumglobal in northern latitudes and found on both sides of the north Atlantic and north Pacific and into the Mediterranean. An important nursery ground for a large number of commercial and non commercial fish species, *Zostera marina* is particularly vulnerable to the effects of climate change, ocean warming and pollution.



**National Biodiversity Data Centre**  
Documenting Ireland's Wildlife



Every dive can be a Seasearch dive

