

# John Dory (*Zeus faber*)

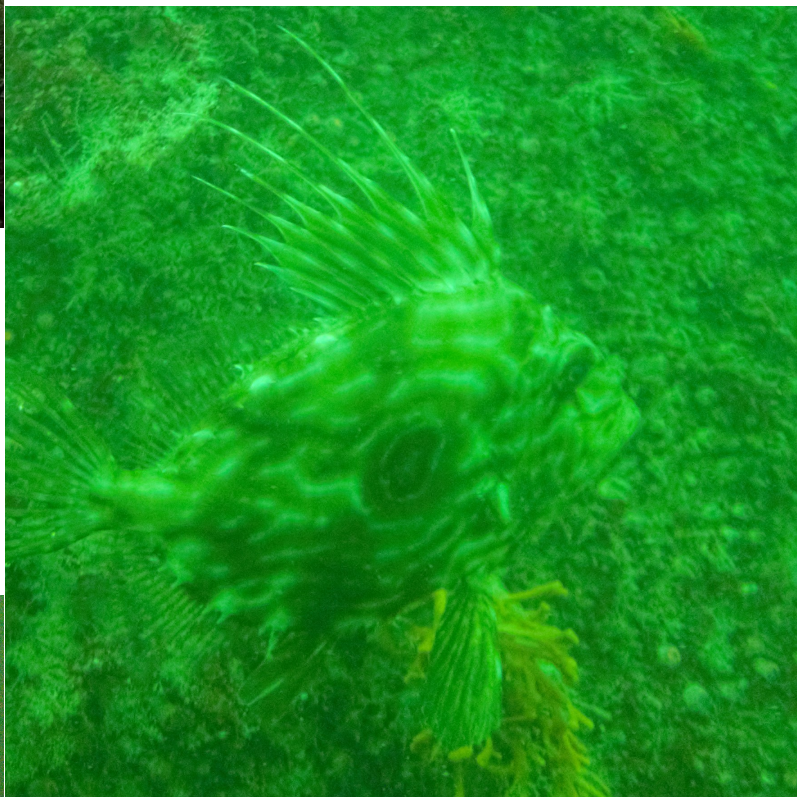
Actinopterygii (Chordata: Zeiformes)



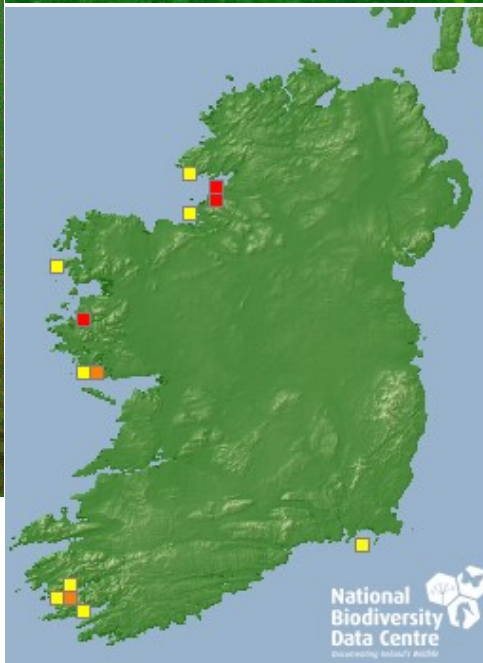
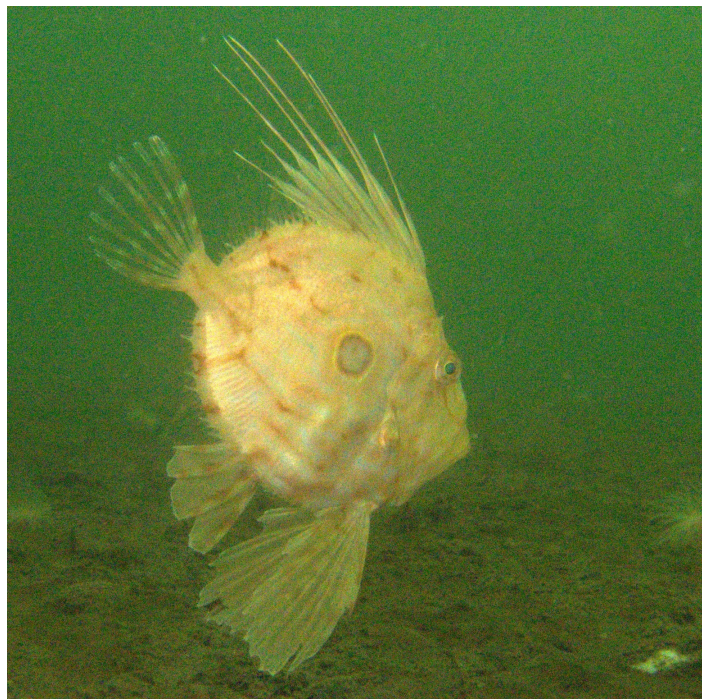
Taxonomy: Chordata->Vertebrata->Actinopterygii

IUCN Red List Categorisation: Data Deficient

This species has a worldwide distribution, found in the Atlantic, Pacific and Indian Oceans on south of Norway and Japan, but is not found in the Americas. Mainly found in coastal waters it is a solitary fish feeding on a variety of prey. Typically found in water from depths of 20m to 120m this species has a rather scattered distribution in Irish waters which may be an artefact of recording.



An extremely distinctive fish the John Dory is unlikely to be confused with any other species seen in Irish waters, even as juveniles. Compressed fish it typically has 8-12 spines on the dorsal fin with a sharp spines running around the length of the body. The dark spot on the side ringed with a grey or yellow border is extremely distinctive. This spot combined with the distinctive shape makes identification of this species extremely easy.



Where can I see them?

Regularly seen at St John's Point , Kenmare Bay and Killary Harbour, juvenile John Dory have also been observed in sheltered sites in Galway.

**National Biodiversity Data Centre**  
Documenting Ireland's Wildlife



Every dive can be a Seasearch dive

