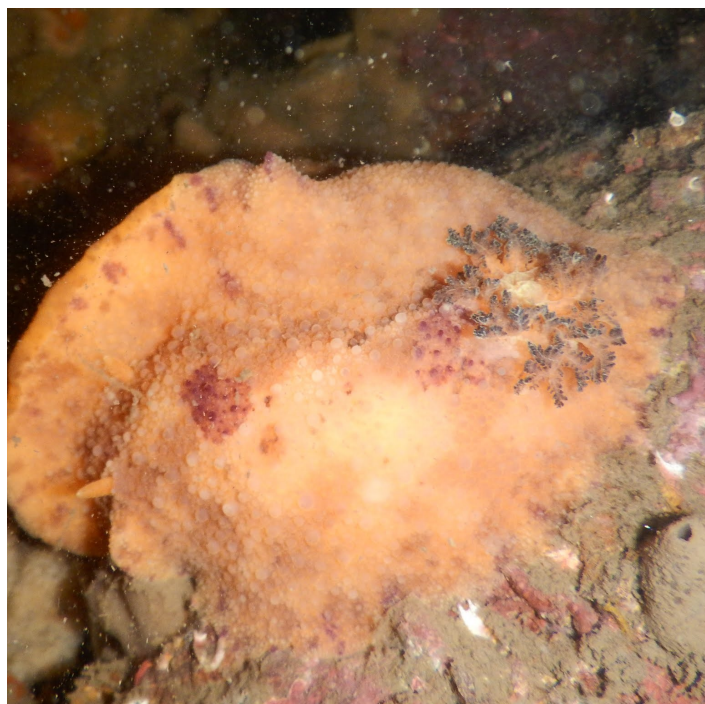
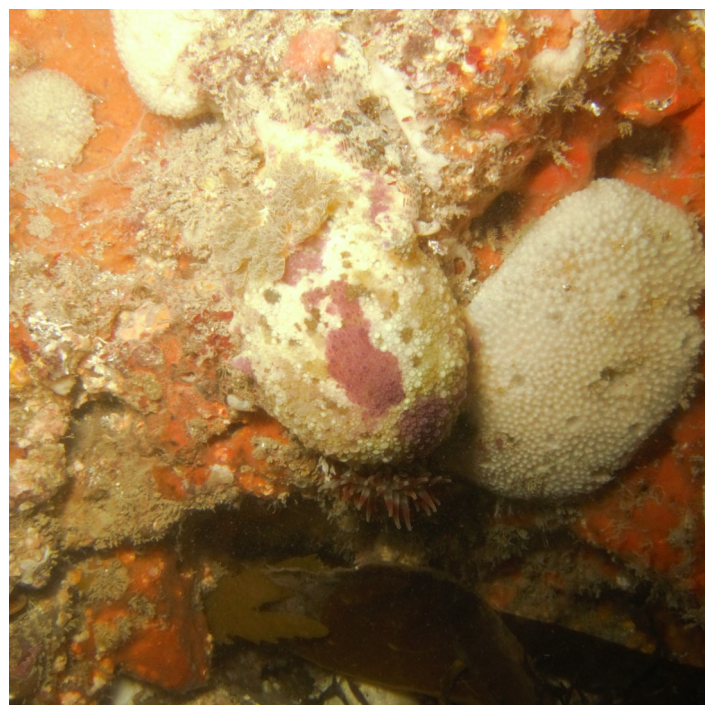


Sea lemon (*Doris pseudoargus*)

Class (Mollusca:Nudibranchia)



A large distinctive sea slug this species can be highly variable in colour (typically yellow) and can grow up to 12cm in length. May be confused with *Geitodoris planata*, generally about half the size when fully grown and less common than *D. pseudoargus*. *G. planata* has brown spots on the underside of the body and more distinctive head appendages in addition to occurring at more shallow depths.

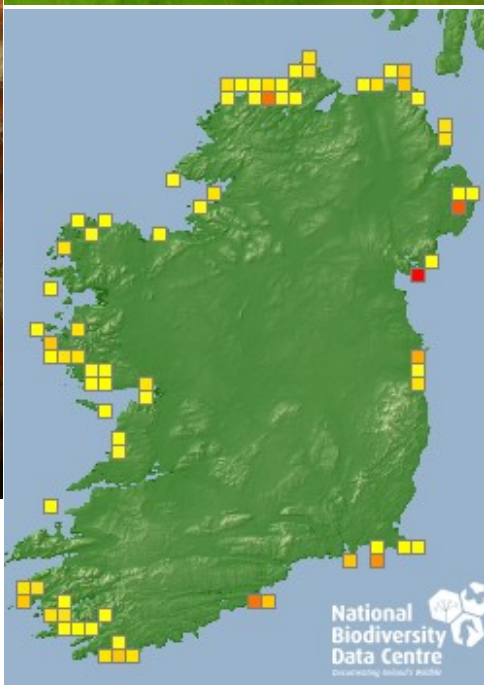
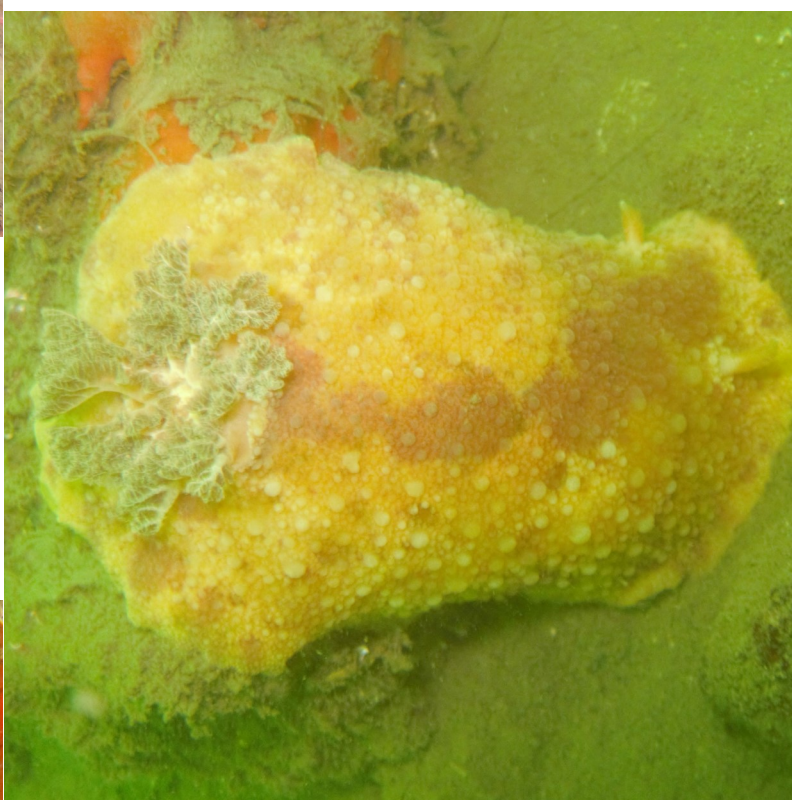


Found on all Irish coasts where suitable habitat occurs. Widespread, and locally abundant where present, the gaps in the recorded distribution of this species may be an artefact of recording effort. Recorded all year round.

Taxonomy:

IUCN Red List Categorisation:

Formerly *Archidoris pseudoargus*, the sea lemon is one of the most commonly seen nudibranch species due to its bright colouration and large size. Distributed from Norway to Spain and into the Mediterranean this species feeds on sponges, particularly the sea orange (*Suberites ficus*) and the breadcrumb sponge (*Halichondria panicea*). Occurs from the lower intertidal to more than 100m.



National Biodiversity Data Centre
Documenting Ireland's Wildlife



Every dive can be a Seasearch dive

