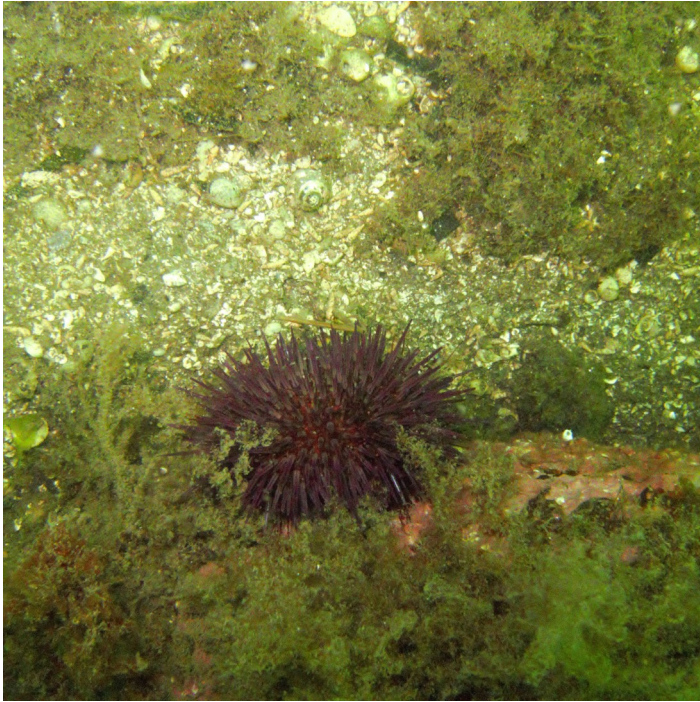


Purple sea urchin (*Paracentrotus lividus*)

Echinodea (Echinodermata: Camarodonta)



Dark purple colour this urchin is similar in size to the shore urchin (*Psammechinus miliaris*). While the shore urchin is green with purple tips to the spines the purple urchin is typically entirely purple in colour. However pale specimens can be confused with the shore urchin. Typically found in shallow water to depths of up to 30m and lodged in crevices.



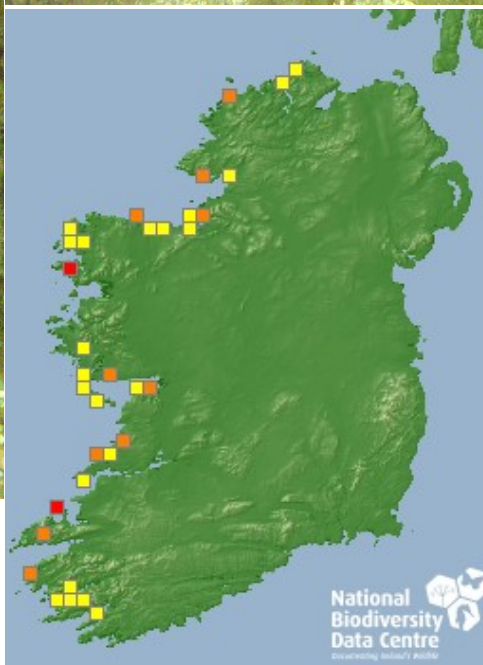
Where to find them?

Quite common in Co Clare, they have recolonised a number of sites on the west coast from where they were previously absent.

Taxonomy: Echinodermata->Echinodea->Camarodonta

IUCN Red List Categorisation:

Previously extremely common on the west coast of Ireland this species suffered major declines due to harvesting for export. Found on all coasts of the British Isles and in the Mediterranean, though less common than previously due to harvesting. Population recovery in Ireland is partially due to aquaculture in Co Cork and from there they have spread up the west coast.



National Biodiversity Data Centre
Documenting Ireland's Wildlife

seasearch
Ireland

Every dive can be a Seasearch dive

