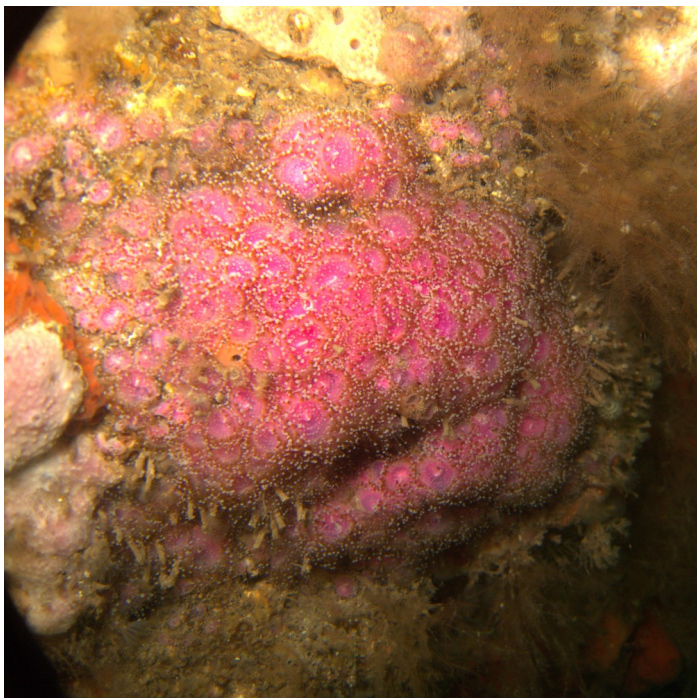


Jewel anemone (*Corynactis viridis*)

Anthozoa (Cnidaria:Corallimorphia)



A small clonal anemone that occurs in a variety of colours with short knobs at the end of it's 100 tentacles. As shown in the various photos the tentacles and knobs are typically in contrasting colours. Occurs in dense aggregations on rocks from the subtidal to beyond diving depths. There is no other species in Irish waters that is likely to be confused with this species.

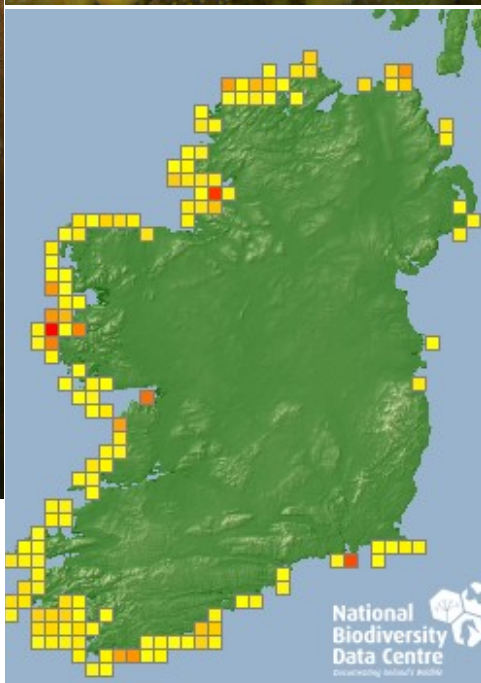
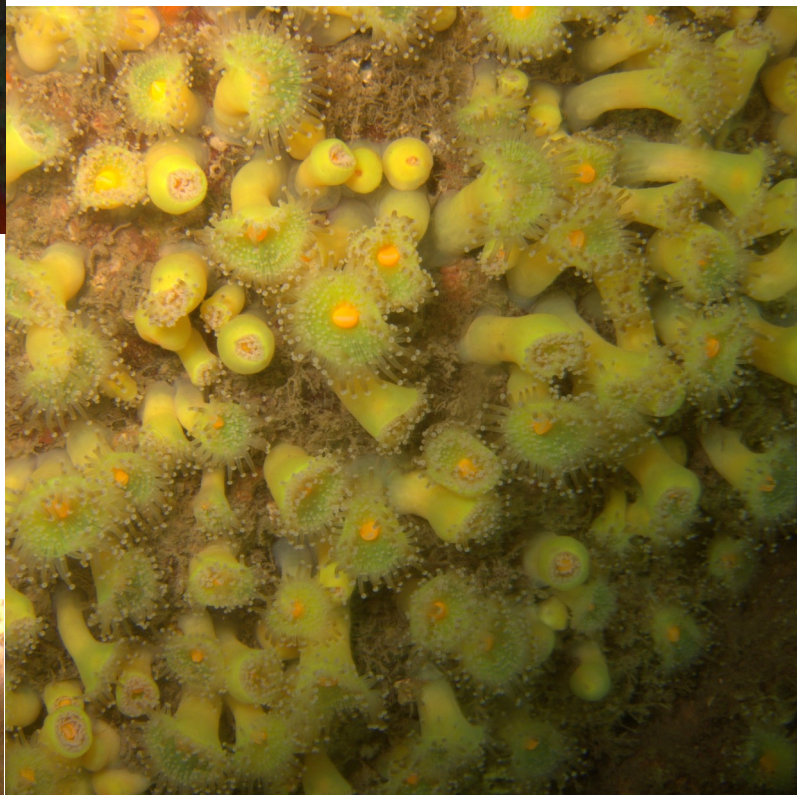


Occurs on all Irish coast where suitable habitats exists. The large gaps in the distribution on the east coast are likely as a result of a combination of lack of suitable habitat but also an artefact of recording effort.

Cnidaria->Anthozoa->Hexacorallia->Corallimorphia

IUCN Red List Categorisation: Not Assessed

Found on all British and Irish coasts, the global distribution of this species extends from Scotland to south west Europe and into the Mediterranean. A variety of colour morphs may occur at a single site but as a clonal organism they are separate when occurring in dense aggregations. In another species of *Corynactis*, *C. californica* 6 different genes were found to be responsible for the colour variations¹.



1. Schnitzler, C.E., Keenan, R.J., McCord, R., Matysik, A., Christianson, L.M. and Had-dock, S.H., 2008. Spectral diversity of fluorescent proteins from the anthozoan *Corynactis californica*. *Marine biotechnology*, 10(3), pp.328-342.

National Biodiversity Data Centre
Documenting Ireland's Wildlife



Every dive can be a Seasearch dive

