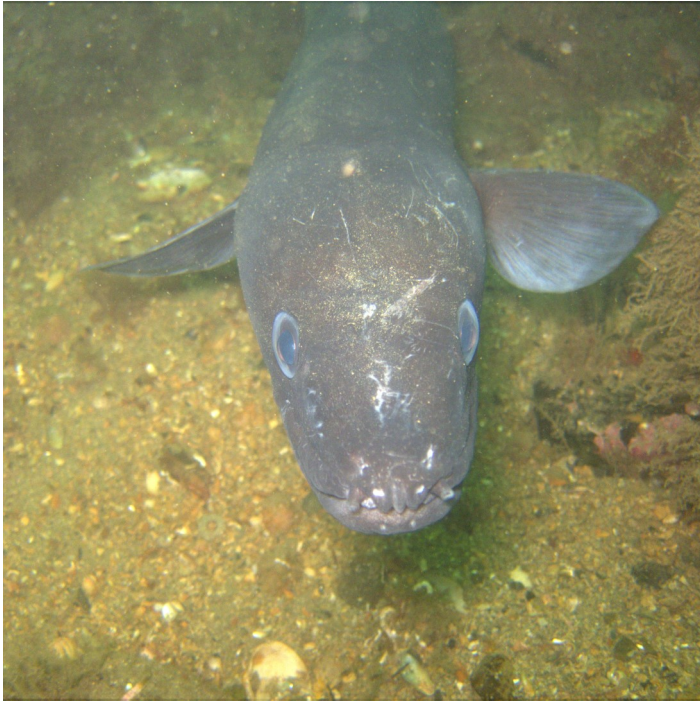
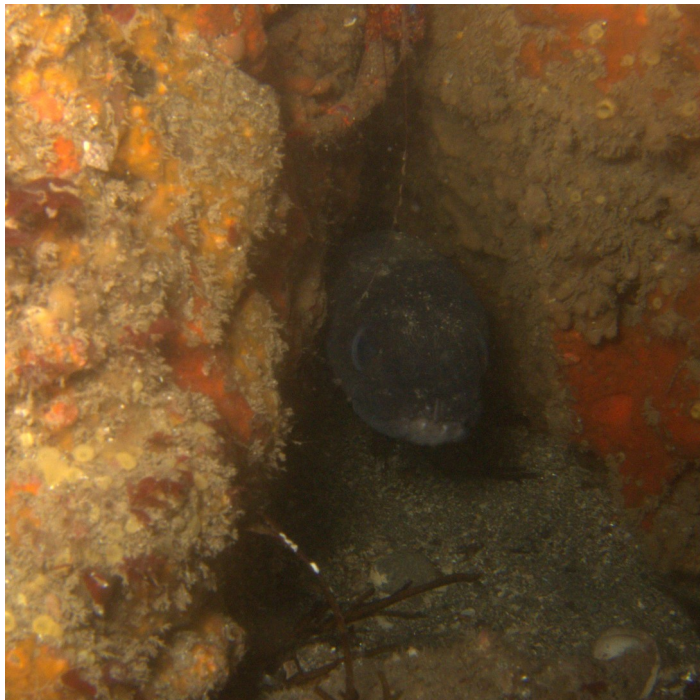


Conger Eel (*Conger conger*)

Actinopterygii (Chordata:Anguilliformes)



Adult fish are extremely distinctive due to their large size, long tapered body and scale less smooth skin. Typically dark grey to greyish black in colour, though lighter underneath they can grow up to 3m in length though an adult is typically grows to ~2m. Unlikely to be confused with any other species in found in Irish waters though juveniles can be difficult to identify if concealed within a crevice.

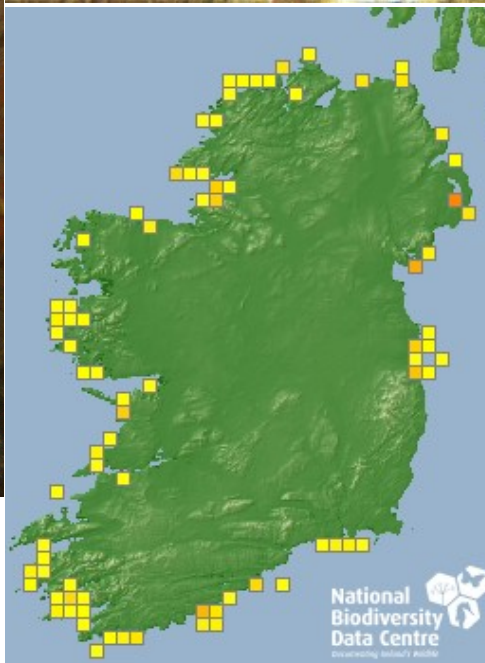


Occur on all Irish coasts with rocky crevices of suitable size they are a number of sites at which they are commonly seen including Killary Fjord, Co Galway, New Quay, Co Clare, the Mughlins Co Dublin, and St John's Point Co Donegal.

Taxonomy: Actinopterygii->Anguilliformes->Congridae

IUCN Red List Categorisation: Least Concern

Found in the eastern Atlantic from Norway to Senegal and throughout the Mediterranean Sea, it is found on all Irish coasts where suitable habitat is present. The IUCN consider it common and moderately abundant throughout its range and they are locally abundant at a number of dive sites. Sexually mature at 5-15 years juveniles typically occupy shallower water with older fish occurring in deeper waters.



National Biodiversity Data Centre
Documenting Ireland's Wildlife



Every dive can be a Seasearch dive

